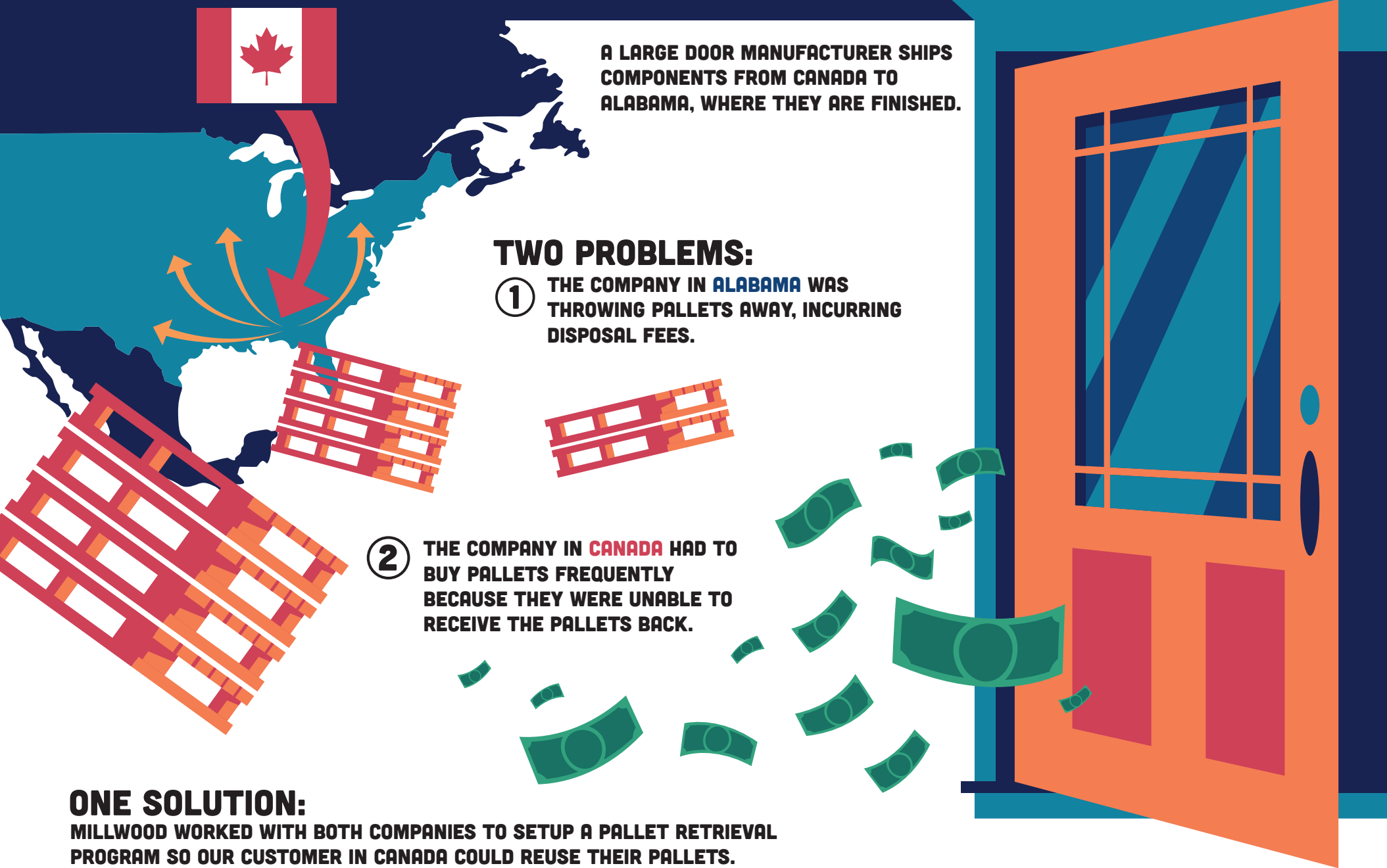


CASE STUDY

THE LIFE CYCLE OF A DOOR



A LARGE DOOR MANUFACTURER SHIPS COMPONENTS FROM CANADA TO ALABAMA, WHERE THEY ARE FINISHED.

TWO PROBLEMS:

① THE COMPANY IN ALABAMA WAS THROWING PALLETS AWAY, INCURRING DISPOSAL FEES.

② THE COMPANY IN CANADA HAD TO BUY PALLETS FREQUENTLY BECAUSE THEY WERE UNABLE TO RECEIVE THE PALLETS BACK.

ONE SOLUTION:

MILLWOOD WORKED WITH BOTH COMPANIES TO SETUP A PALLET RETRIEVAL PROGRAM SO OUR CUSTOMER IN CANADA COULD REUSE THEIR PALLETS.



APPROXIMATELY

9,500

BOARDS ARE RETURNED TO CANADA PER MONTH, DIVERTING

18 TONS

OF WOOD WASTE FROM LANDFILLS ANNUALLY

IT ALSO SAVED OUR CUSTOMER IN CANADA

\$26,000

IN ANNUAL PALLET COSTS.